

TURBO TWIST

PCE

Connection
to the future

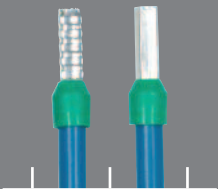
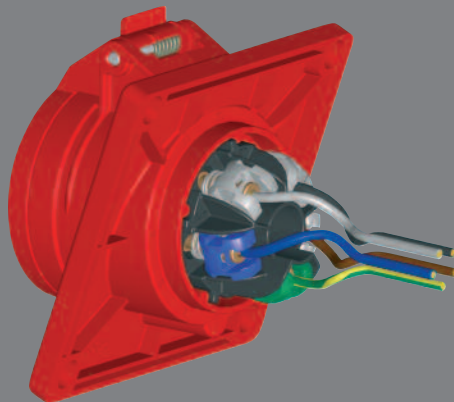
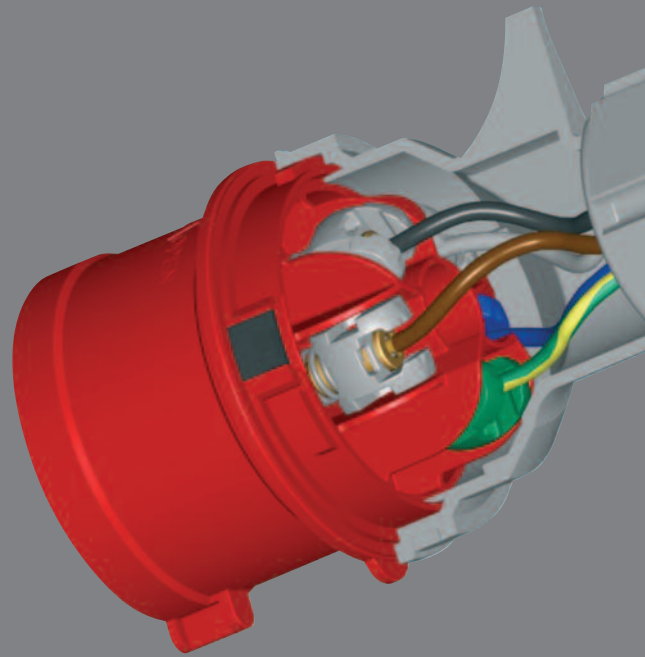


TURBO TWIST

ALL TWIST ADVANTAGES



Safety

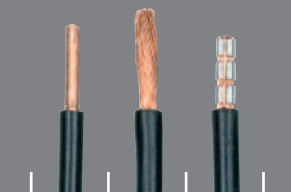


- ▶ FOR ALL STANDARD CABLE DIAMETERS
 - 16A: TO 2,5 MM² FLEXIBLE, TO 4 MM² SOLID
 - 32A: TO 6,0 MM² FLEXIBLE, TO 10 MM² SOLID

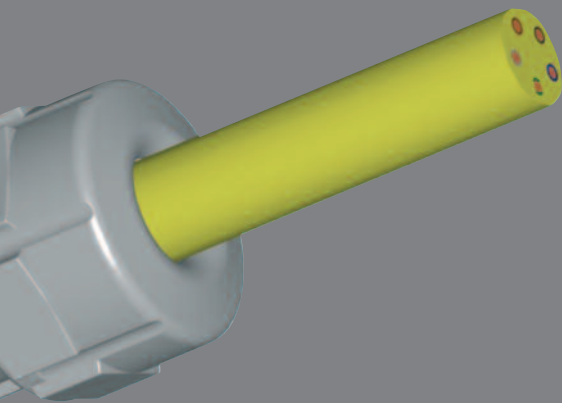
- ▶ FLEXIBLE STRIPPED WIRES
 - WITH OR WITHOUT END SLEEVE OR SOLID STRIPPED WIRES
 - STRIPPING LENGTHS: 16A FROM 10 TO 12 MM
 - 32A FROM 12 TO 14 MM

- ▶ ALSO NICKEL-PLATED CONTACTS AVAILABLE

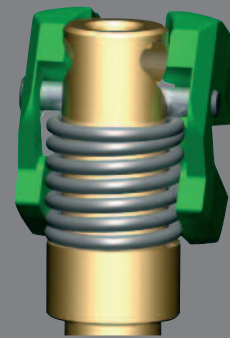
- ▶ ÖVE APPROVAL



NEW SCREWLESS CONNECTION TECHNOLOGY



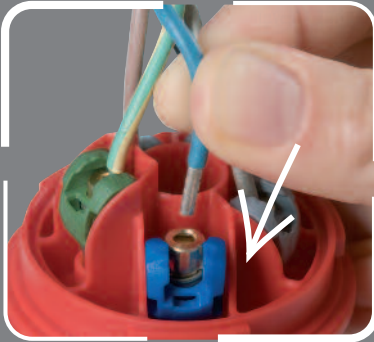
Heavy Duty



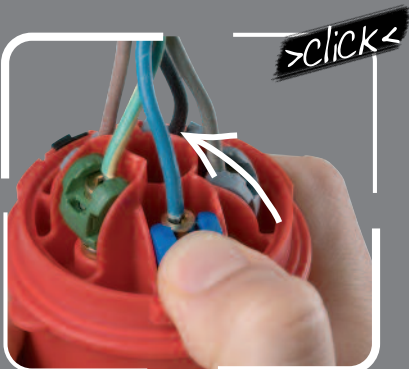
- ▶ FOR EXTREME ENVIRONMENTS
- ▶ EXCEPTIONAL HIGH IMPACT RESISTANCE
- ▶ HIGH TENSILE STRENGTH
- ▶ SHOCK AND VIBRATION RESISTANT TERMINALS
- ▶ INDEPENDENT VISIBLE AND AUDIBLE SNAP-LOCK
- ▶ NO ADJUSTING AND LOCKING BY SEPARATE BOLT



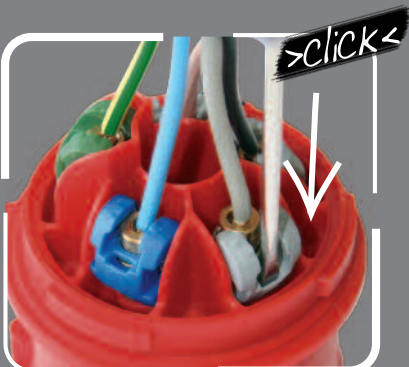
Time Saving



1) INSERT WIRE



2) CLOSE TERMINAL



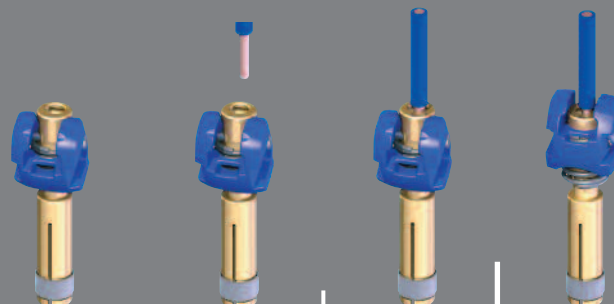
REOPEN TERMINAL

- ▶ SCREWLESS TT-TERMINAL (PCE-PATENT IN PROCESS)
 - OPEN CONTACT TERMINALS, READY FOR ASSEMBLY
 - FAST CABLE INSTALLATION

- ▶ SIMPLE CLOSING AND OPENING JUST BY THUMB PRESSURE

- ▶ ERROR FREE CONNECTION THROUGH CLEARLY MARKED TERMINALS

- ▶ MAINTENANCE-FREE TERMINALS



order numbers

"Turbo Twist" plug

- to order nickel-plated contacts please add a "v", e.g. 015-6TTv

IP44 splashproof
IP67 on request



Amp	Poles	110V~	230V~	400V~
16	3	013-4TT	013-6TT	013-9TT
16	4	014-4TT	014-9TT	014-6TT
16	5	015-4TT	015-9TT	015-6TT
32	3	023-4TT	023-6TT	023-9TT
32	4	024-4TT	024-9TT	024-6TT
32	5	025-4TT	025-9TT	025-6TT

"Turbo Twist" connector

- to order nickel-plated contacts please add a "v", e.g. 215-6TTv

IP44 splashproof
IP67 on request



Amp	Poles	110V~	230V~	400V~
16	3	213-4TT	213-6TT	213-9TT
16	4	214-4TT	214-9TT	214-6TT
16	5	215-4TT	215-9TT	215-6TT
32	3	223-4TT	223-6TT	223-9TT
32	4	224-4TT	224-9TT	224-6TT
32	5	225-4TT	224-9TT	225-6TT

"Turbo Twist" wall socket

- to order nickel-plated contacts please add a "v", e.g. 115-6TTv

IP44 splashproof
IP67 on request



Amp	Poles	110V~	230V~	400V~
16	3	113-4TT	113-6TT	113-9TT
16	4	114-4TT	114-9TT	114-6TT
16	5	115-4TT	115-9TT	115-6TT
32	3	123-4TT	123-6TT	123-9TT
32	4	124-4TT	124-9TT	124-6TT
32	5	125-4TT	125-9TT	125-6TT

"Turbo Twist" flanged socket straight

- to order nickel-plated contacts please add a "v", e.g. 315-6TTv

IP44 splashproof
IP67 on request



Amp	Poles	110V~	230V~	400V~
Flange: 70x70, Fix.center: 56x56				
16	3	313-4TT	313-6TT	313-9TT
16	4	314-4TT	314-9TT	314-6TT
16	5	315-4TT	315-9TT	315-6TT
32	3	323-4TT	323-6TT	323-9TT
32	4	324-4TT	324-9TT	324-6TT
32	5	325-4TT	323-9TT	325-6TT

"Turbo Twist" flanged socket straight

- to order nickel-plated contacts please add a "v", e.g. 315-6TTfv

IP44 splashproof
IP67 on request



Amp	Poles	110V~	230V~	400V~
Flange: 75x75, Fix.center: 60x60				
16	3	313-4TTf7	313-6TTf7	313-9TTf7
16	4	314-4TTf7	314-9TTf7	314-6TTf7
16	5	315-4TTf7	315-9TTf7	315-6TTf7
32	3	323-4TTf7	323-6TTf7	323-9TTf7
32	4	324-4TTf7	324-9TTf7	324-6TTf7
32	5	325-4TTf7	325-9TTf7	325-6TTf7

"Turbo Twist" flanged socket sloping

- to order nickel-plated contacts please add a "v", e.g. 415-6TTv

IP44 splashproof
IP67 on request



Amp	Poles	110V~	230V~	400V~
Flange: 70x70, Fix.center: 65x50				
16	3	413-4TT	413-6TT	413-9TT
16	4	414-4TT	414-9TT	414-6TT
Flange: 97x80, Fix.center: 73x60				
16	5	415-4TT	415-9TT	415-6TT
32	3	423-4TT	423-6TT	423-9TT
32	4	424-4TT	424-9TT	424-6TT
32	5	425-4TT	425-9TT	425-6TT

"Turbo Twist" flanged socket sloping

- to order nickel-plated contacts please add a "v", e.g. 415-6TTfv

IP44 splashproof



Amp	Poles	110V~	230V~	400V~
Flange: 100x92, Fix.center: 85x77				
16	5	415-4TTf9	415-9TTf9	415-6TTf9
32	5	425-4TTf9	425-9TTf9	425-6TTf9

PC ELECTRIC Ges.m.b.H.

A-4973 St. Martin/Innkreis
Diesseits 145

AUSTRIA - EUROPE

Tel. +43 / 7751 / 61220

Fax +43 / 7751 / 6969

E-Mail: office@pcelectric.at

www.pcelectric.at